

# Dissolved cysteine and glutathione from R/V Knorr KN199-04 in the subtropical North Atlantic Ocean from October 2010 (U.S. GEOTRACES NAT project)

**Website:** <https://www.bco-dmo.org/dataset/3864>

**Version:** 22 Jan 2013

**Version Date:** 2013-03-05

## Project

» [U.S. GEOTRACES North Atlantic Transect \(GA03\)](#) (U.S. GEOTRACES NAT)

## Program

» [U.S. GEOTRACES](#) (U.S. GEOTRACES)

Contributors	Affiliation	Role
<a href="#">Hammerschmidt, Chad</a>	Wright State University	Principal Investigator, Contact
<a href="#">Lamborg, Carl</a>	Woods Hole Oceanographic Institution (WHOI)	Principal Investigator, Contact
<a href="#">Swarr, Gretchen</a>	Woods Hole Oceanographic Institution (WHOI)	Contact
<a href="#">Copley, Nancy</a>	Woods Hole Oceanographic Institution (WHOI BCO-DMO)	BCO-DMO Data Manager

## Table of Contents

- [Dataset Description](#)
  - [Methods & Sampling](#)
  - [Data Processing Description](#)
- [Data Files](#)
- [Parameters](#)
- [Instruments](#)
- [Deployments](#)
- [Project Information](#)
- [Program Information](#)
- [Funding](#)

## Dataset Description

This dataset included concentrations of filtered cysteine and glutathione (the only two thiols detected) from 21 full stations across the cruise path. The current dataset (as of Dec 2012) contains only results from 2010 cruise (8 stations) and primarily in the upper 1000 meters. Deeper water samples were collected at most stations, but analysis of a few deep water samples has indicated that most of these samples are below detection, and we have therefore elected not to analyze many of the deeper samples.

## Methods & Sampling

Detailed method descriptions can be found in Kading, 2012.

Sample collection: 125 mL filtered (0.45 µm) from the ODF rosette, frozen immediately after collection and held that way until analysis. Samples pre-concentrated on C-18 columns the day of derivitization, extracted with methanol.

Sample bottles/cleaning: Kading, 2012

Analysis:

Dupont et al., 2006, Kading, 2012, Tang et al., 2003

Agilent 1200 HPLC, 4.6 x 250 mm Waters Spherisorb 5 µm column with attached 4.6 x 10 mm guard

column, 100 uL sample loop, gradient was 8% acetonitrile in 0.1% TFA to 35% acetonitrile linearly over 47 minutes and then rinsed for 5 minutes in 80% acetonitrile in 0.1% TFA. The column was conditioned for 30 minutes with 92% 0.1% trifluoroacetic acid (TFA) and 8% acetonitrile at 1 mL min<sup>-1</sup> between each sample analyzed.

Detection limit: 0.015 nM for cysteine and 0.01 nM for glutathione

Procedural duplicates: 15% r.s.d.

Recovery of known additions: 100%

## Data Processing Description

"lt\_DL" indicates that a sample was below the method detection limit.

### Related files and references:

Dupont, C.L., Moffett, J.W., Bidigare, R.R. and Ahner, B.A., 2006. Distributions of dissolved and particulate biogenic thiols in the subarctic Pacific Ocean. Deep-Sea Research Part I-Oceanographic Research Papers, 53(12): 1961-1974.

Kading, T., 2012. Distribution of thiols in the northwest Atlantic Ocean, WHOI-MIT Joint Program, Woods Hole, MA.

Tang, D.G., Shafer, M.M., Vang, K., Karner, D.A. and Armstrong, D.E., 2003. Determination of dissolved thiols using solid-phase extraction and liquid chromatographic determination of fluorescently derivatized thiolic compounds. Journal of Chromatography A, 998(1-2): 31-40.

### BCO-DMO processing notes:

These changes were made to the submitted data file:

- added cruise\_id
- inserted nd for blanks
- renamed variables to better match those in Master list
- adjusted formats: lat/lon
- changed '>DL' to lt\_DL

### Additional GEOTRACES Processing:

After the data were submitted to the International Data Management Office, BODC, the office noticed that important identifying information was missing in many datasets. With the agreement of BODC and the US GEOTRACES lead PIs, BCO-DMO added standard US GEOTRACES information, such as the US GEOTRACES event number, to each submitted dataset lacking this information. To accomplish this, BCO-DMO compiled a 'master' dataset composed of the following parameters: station\_GEOTRC, cast\_GEOTRC (bottle and pump data only), event\_GEOTRC, sample\_GEOTRC, sample\_bottle\_GEOTRC (bottle data only), bottle\_GEOTRC (bottle data only), depth\_GEOTRC\_CTD (bottle data only), depth\_GEOTRC\_CTD\_rounded (bottle data only), BTL\_ISO\_DateTime\_UTC (bottle data only), and GeoFish\_id (GeoFish data only). This added information will facilitate subsequent analysis and inter comparison of the datasets.

Bottle parameters in the master file were taken from the GT-C\_Bottle\_GT10, GT-C\_Bottle\_GT11, ODF\_Bottle\_GT10, and ODF\_Bottle\_GT11 datasets. Non-bottle parameters, including those from GeoFish tows, Aerosol sampling, and McLane Pumps, were taken from the Event\_Log\_GT10 and Event\_Log\_GT11 datasets. McLane pump cast numbers missing in event logs were taken from the Particulate Th-234 dataset submitted by Ken Buesseler.

A standardized BCO-DMO method (called "join") was then used to merge the missing parameters to each US GEOTRACES dataset, most often by matching on sample\_GEOTRC or on some unique combination of other parameters.

If the master parameters were included in the original data file and the values did not differ from the master file, the original data columns were retained and the names of the parameters were changed from the PI-submitted names to the standardized master names. If there were differences between the PI-supplied parameter values and those in the master file, both columns were retained. If the original data submission included all of the master parameters, no additional columns were added, but parameter names were modified to match the naming conventions of the master file.

See the dataset parameters documentation for a description of which parameters were supplied by the PI and

which were added via the join method.

[ [table of contents](#) | [back to top](#) ]

---

## Data Files

File
<b>cyst_glut_joined.csv</b> (Comma Separated Values (.csv), 13.20 KB) MD5:4480012845d308feb5bd2ad53c797bb
Primary data file for dataset ID 3864

[ [table of contents](#) | [back to top](#) ]

---

## Parameters

Parameter	Description	Units
cruise_id	Official cruise identifier e.g. KN199-04 = R/V Knorr cruise number 199-04.	text
station_GEOTRC	GEOTRACES station number; ranges from 1 through 12 for KN199-04 and 1 through 24 for KN204-01. Stations 7 and 9 were skipped on KN204-01. PI-supplied values were identical to those in the intermediate US GEOTRACES master file. Originally submitted as 'STNNBR', this parameter name has been changed to conform to BCO-DMO's GEOTRACES naming conventions.	integer
cast_GEOTRC	Cast identifier, numbered consecutively within a station. PI-supplied values were identical to those in the intermediate US GEOTRACES master file. Originally submitted as 'CASTNO', this parameter name has been changed to conform to BCO-DMO's GEOTRACES naming conventions.	integer
sample_GEOTRC	Unique identifying number for US GEOTRACES samples; ranges from 5033 to 6078 for KN199-04 and from 6112 to 8148 for KN204-01. PI-supplied values were identical to those in the intermediate US GEOTRACES master file. Originally submitted as 'GEOTRC_SAMPNO', this parameter name has been changed to conform to BCO-DMO's GEOTRACES naming conventions.	integer
date	UTC date of sample collection	yyyymmdd
time	UTC time	HHMM
lat	latitude; north is positive	decimal degrees
lon	longitude; east is positive	decimal degrees

---

depth	sample depth; provided in original data submission.	meters
Cys	concentration of cysteine	nanomoles/liter
Cys_rsd	cysteine error as percent relative standard deviation	percent
Cys_flag	cysteine quality flag: 2) ok 3) questionable 4) bad analysis 5) sample lost 6) mean of replicates 9) sample was not collected for thiol analysis	integer
GSH	concentration of glutathione	nanomoles/liter
GSH_rsd	glutathione error as percent relative standard deviation	percent
GSH_flag	glutathione quality flag: 2) ok 3) questionable 4) bad analysis 5) sample lost 6) mean of replicates	integer
event_GEOTRC	Unique identifying number for US GEOTRACES sampling events; ranges from 2001 to 2225 for KN199-04 events and from 3001 to 3282 for KN204-01 events. Values were added from the intermediate US GEOTRACES master file (see Processing Description).	dimensionless
sample_bottle_GEOTRC	Unique identification numbers given to samples taken from bottles; ranges from 1 to 24; often used synonymously with bottle number. Values were added from the intermediate US GEOTRACES master file (see Processing Description).	dimensionless
bottle_GEOTRC	Alphanumeric characters identifying bottle type (e.g. NIS representing Niskin and GF representing GOFLO) and position on a CTD rosette. Values were added from the intermediate US GEOTRACES master file (see Processing Description).	dimensionless
depth_GEOTRC_CTD	Observation/sample depth in meters; calculated from CTD pressure. Values were added from the intermediate US GEOTRACES master file (see Processing Description).	meters

BTL_ISO_DateTime_UTC	Date and time (UTC) variable recorded at the bottle sampling time in ISO compliant format. Values were added from the intermediate US GEOTRACES master file (see Processing Description). This standard is based on ISO 8601:2004(E) and takes on the following form: 2009-08-30T14:05:00[.xx]Z (UTC time)	YYYY-MM-DDTHH:MM:SS[.xx] [+/-TZ]
----------------------	---	----------------------------------

[ [table of contents](#) | [back to top](#) ]

## Instruments

<b>Dataset-specific Instrument Name</b>	High Performance Liquid Chromatograph
<b>Generic Instrument Name</b>	High-Performance Liquid Chromatograph
<b>Dataset-specific Description</b>	Agilent 1200 HPLC
<b>Generic Instrument Description</b>	A High-performance liquid chromatograph (HPLC) is a type of liquid chromatography used to separate compounds that are dissolved in solution. HPLC instruments consist of a reservoir of the mobile phase, a pump, an injector, a separation column, and a detector. Compounds are separated by high pressure pumping of the sample mixture onto a column packed with microspheres coated with the stationary phase. The different components in the mixture pass through the column at different rates due to differences in their partitioning behavior between the mobile liquid phase and the stationary phase.

<b>Dataset-specific Instrument Name</b>	Trace Metal Bottle
<b>Generic Instrument Name</b>	Trace Metal Bottle
<b>Generic Instrument Description</b>	Trace metal (TM) clean rosette bottle used for collecting trace metal clean seawater samples.

[ [table of contents](#) | [back to top](#) ]

## Deployments

**KN199-04**

<b>Website</b>	<a href="https://www.bco-dmo.org/deployment/58066">https://www.bco-dmo.org/deployment/58066</a>
<b>Platform</b>	R/V Knorr
<b>Report</b>	<a href="http://bcodata.whoi.edu/US_GEOTRACES/AtlanticSection/Cruise_Report_for_Knorr_199_Final_v3.pdf">http://bcodata.whoi.edu/US_GEOTRACES/AtlanticSection/Cruise_Report_for_Knorr_199_Final_v3.pdf</a>
<b>Start Date</b>	2010-10-15
<b>End Date</b>	2010-11-04
<b>Description</b>	<p>This cruise constitutes the first survey section as part of the U.S. participation in an international program named GEOTRACES. Funding: NSF OCE award 0926423 Science Objectives: To obtain state of the art trace metal and isotope measurements on a suite of samples taken on a mid-latitude zonal transect of the North Atlantic. In particular, sampling targeted the oxygen minimum zone extending off the west African coast near Mauritania, the TAG hydrothermal field, and the western boundary current system along Line W. For additional information, please refer to the GEOTRACES program Web site (<a href="https://www.geotraces.org/">https://www.geotraces.org/</a>) for overall program objectives and a summary of properties measured. Science Activities include seawater sampling via GoFLO and Niskin carousels, in situ pumping (and filtration), CTDO2 and transmissometer sensors, underway pumped sampling of surface waters, and collection of aerosols and rain. Hydrography, CTD and nutrient measurements were supported by the Ocean Data Facility (J. Swift) at Scripps Institution of Oceanography and funded through NSF Facilities. They provided an additional CTD rosette system along with nephelometer and LADCP. A trace metal clean Go-Flo Rosette and winch were provided by the group at Old Dominion University (G. Cutter) along with a towed underway pumping system. Additional cruise information is available from the Rolling Deck to Repository (R2R): <a href="https://www.rvdata.us/search/cruise/KN199-04">https://www.rvdata.us/search/cruise/KN199-04</a> Other Relevant Links: List of cruise participants: [ PDF ] Cruise track: JPEG image (from Woods Hole Oceanographic Institution, vessel operator) ADCP data are available from the Currents ADCP group at the University of Hawaii: KN199-04 ADCP</p>

[ [table of contents](#) | [back to top](#) ]

## Project Information

### U.S. GEOTRACES North Atlantic Transect (GA03) (U.S. GEOTRACES NAT)

**Website:** <https://www.geotraces.org/>

**Coverage:** Subtropical western and eastern North Atlantic Ocean (GA03)

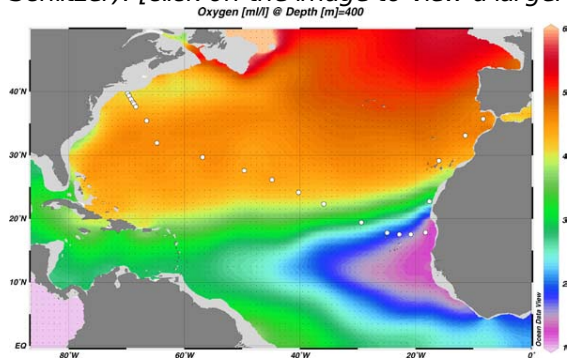
*Much of this text appeared in an article published in OCB News, October 2008, by the OCB Project Office.*

The first U.S. GEOTRACES Atlantic Section will be specifically centered around a sampling cruise to be carried out in the North Atlantic in 2010. Ed Boyle (MIT) and Bill Jenkins (WHOI) organized a three-day planning workshop that was held September 22-24, 2008 at the Woods Hole Oceanographic Institution. The main goal of the workshop, sponsored by the National Science Foundation and the U.S. GEOTRACES Scientific Steering Committee, was to design the implementation plan for the first U.S. GEOTRACES Atlantic Section. The primary cruise design motivation was to improve knowledge of the sources, sinks and internal cycling of Trace Elements and their Isotopes (TEIs) by studying their distributions along a section in the North Atlantic (Figure 1). The North Atlantic has the full suite of processes that affect TEIs, including strong meridional advection, boundary scavenging and source effects, aeolian deposition, and the salty Mediterranean Outflow. The North Atlantic is particularly important as it lies at the "origin" of the global Meridional Overturning Circulation.

It is well understood that many trace metals play important roles in biogeochemical processes and the carbon cycle, yet very little is known about their large-scale distributions and the regional scale processes that affect them. Recent advances in sampling and analytical techniques, along with advances in our understanding of their roles in enzymatic and catalytic processes in the open ocean provide a natural opportunity to make substantial advances in our understanding of these important elements. Moreover, we are motivated by the prospect of global change and the need to understand the present and future workings of the ocean's biogeochemistry. The GEOTRACES strategy is to measure a broad suite of TEIs to constrain the critical biogeochemical processes that influence their distributions. In addition to these "exotic" substances, more traditional properties, including

macronutrients (at micromolar and nanomolar levels), CTD, bio-optical parameters, and carbon system characteristics will be measured. The cruise starts at Line W, a repeat hydrographic section southeast of Cape Cod, extends to Bermuda and subsequently through the North Atlantic oligotrophic subtropical gyre, then transects into the African coast in the northern limb of the coastal upwelling region. From there, the cruise goes northward into the Mediterranean outflow. The station locations shown on the map are for the "fulldepth TEI" stations, and constitute approximately half of the stations to be ultimately occupied.

*Figure 1. The proposed 2010 Atlantic GEOTRACES cruise track plotted on dissolved oxygen at 400 m depth. Data from the World Ocean Atlas (Levitus et al., 2005) were plotted using Ocean Data View (courtesy Reiner Schlitzer). [click on the image to view a larger version]*

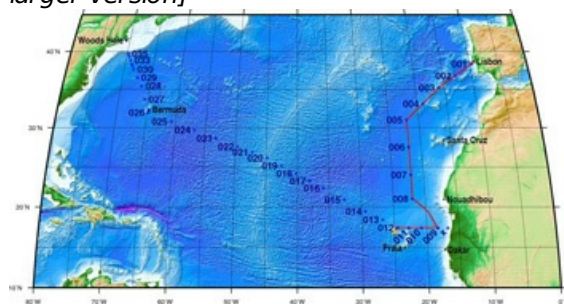


Hydrography, CTD and nutrient measurements will be supported by the Ocean Data Facility (J. Swift) at Scripps Institution of Oceanography and funded through NSF Facilities. They will be providing an additional CTD rosette system along with nephelometer and LADCP. A trace metal clean Go-Flo Rosette and winch will be provided by the group at Old Dominion University (G. Cutter) along with a towed underway pumping system.

The North Atlantic Transect cruise began in 2010 with KN199 leg 4 (station sampling) and leg 5 (underway sampling only) (Figure 2).

#### [KN199-04 Cruise Report \(PDF\)](#)

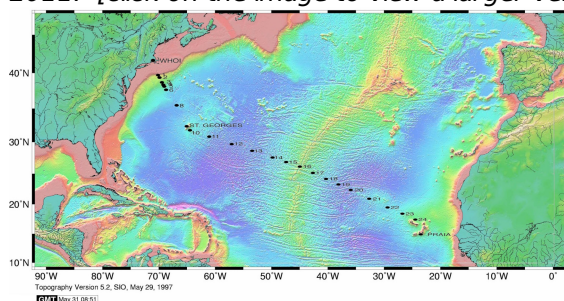
*Figure 2. The red line shows the cruise track for the first leg of the US Geotraces North Atlantic Transect on the R/V Knorr in October 2010. The rest of the stations (beginning with 13) will be completed in October-December 2011 on the R/V Knorr (courtesy of Bill Jenkins, Chief Scientist, GNAT first leg). [click on the image to view a larger version]*



The section completion effort resumed again in November 2011 with KN204-01A,B (Figure 3).

#### [KN204-01A,B Cruise Report \(PDF\)](#)

*Figure 3. Station locations occupied on the US Geotraces North Atlantic Transect on the R/V Knorr in November 2011. [click on the image to view a larger version]*



Data from the North Atlantic Transect cruises are available under the Datasets heading below, and consensus values for the SAFe and North Atlantic GEOTRACES Reference Seawater Samples are available from the GEOTRACES Program Office: [Standards and Reference Materials](#)

**ADCP data** are available from the Currents ADCP group at the University of Hawaii at the links below:

[KN199-04](#) (leg 1 of 2010 cruise; Lisbon to Cape Verde)

[KN199-05](#) (leg 2 of 2010 cruise; Cape Verde to Charleston, NC)

[KN204-01A](#) (part 1 of 2011 cruise; Woods Hole, MA to Bermuda)

[KN204-01B](#) (part 2 of 2011 cruise; Bermuda to Cape Verde)

[ [table of contents](#) | [back to top](#) ]

---

## Program Information

### U.S. GEOTRACES (U.S. GEOTRACES)

**Website:** <http://www.geotraces.org/>

**Coverage:** Global

**GEOTRACES** is a [SCOR](#) sponsored program; and funding for program infrastructure development is provided by the [U.S. National Science Foundation](#).

GEOTRACES gained momentum following a special symposium, S02: Biogeochemical cycling of trace elements and isotopes in the ocean and applications to constrain contemporary marine processes (GEOSECS II), at a 2003 Goldschmidt meeting convened in Japan. The GEOSECS II acronym referred to the Geochemical Ocean Section Studies To determine full water column distributions of selected trace elements and isotopes, including their concentration, chemical speciation, and physical form, along a sufficient number of sections in each ocean basin to establish the principal relationships between these distributions and with more traditional hydrographic parameters;

- \* To evaluate the sources, sinks, and internal cycling of these species and thereby characterize more completely the physical, chemical and biological processes regulating their distributions, and the sensitivity of these processes to global change; and

- \* To understand the processes that control the concentrations of geochemical species used for proxies of the past environment, both in the water column and in the substrates that reflect the water column.

GEOTRACES will be global in scope, consisting of ocean sections complemented by regional process studies. Sections and process studies will combine fieldwork, laboratory experiments and modelling. Beyond realizing the scientific objectives identified above, a natural outcome of this work will be to build a community of marine scientists who understand the processes regulating trace element cycles sufficiently well to exploit this knowledge reliably in future interdisciplinary studies.

Expand "Projects" below for information about and data resulting from individual US GEOTRACES research projects.

[ [table of contents](#) | [back to top](#) ]

---

## Funding

Funding Source	Award
<a href="#">NSF Division of Ocean Sciences (NSF OCE)</a>	<a href="#">OCE-0927274</a>
<a href="#">NSF Division of Ocean Sciences (NSF OCE)</a>	<a href="#">OCE-1132515</a>



[ [table of contents](#) | [back to top](#) ]