

HADES-K and HADES-M cruise track position data from cruises TN309, FK141109 from the Kermadec Trench adjacent to New Zealand and Mariana Trench adjacent to Guam; 2014 (HADES project)

Website: <https://www.bco-dmo.org/dataset/536805>

Version: 18 December 2015

Version Date: 2015-12-18

Project

» [Controls on Hadal Megafaunal Community Structure: a Systematic Examination of Pressure, Food Supply, and Topography](#) (HADES)

Contributors	Affiliation	Role
Drazen, Jeffrey C.	University of Hawai'i (UH)	Principal Investigator
Shank, Timothy M.	Woods Hole Oceanographic Institution (WHOI)	Principal Investigator, Contact
Yancey, Paul	Whitman College	Principal Investigator
Gegg, Stephen R.	Woods Hole Oceanographic Institution (WHOI BCO-DMO)	BCO-DMO Data Manager

Table of Contents

- [Dataset Description](#)
 - [Methods & Sampling](#)
 - [Data Processing Description](#)
- [Data Files](#)
- [Parameters](#)
- [Instruments](#)
- [Deployments](#)
- [Project Information](#)
- [Funding](#)

Dataset Description

Ship's Cruise Tracks from R2R Archive files for TN309/HADES-K and FK141109/HADES-M
Cruise_Id, ISO_DateTime_UTC, Latitude, Longitude, SOG, COG
1 minute fixes

Methods & Sampling

Generated by BCO-DMO staff from R2R Archive files

HADES-K/TN309 R2R File Creation date: 2014-10-14T23:44:26Z

HADES-M/FK141109 R2R File Creation date: 2015-05-06T10:09:31Z

Data Processing Description

Generated by BCO-DMO staff from R2R Archive files

HADES-K/TN309 R2R File Creation date: 2014-10-14T23:44:26Z

HADES-M/FK141109 R2R File Creation date: 2015-05-06T10:09:31Z

Data Files

File
CruiseTrack.csv (Comma Separated Values (.csv), 6.86 MB) MD5:d4904ba12fe8acada6a233b7289134bf Primary data file for dataset ID 536805

Parameters

Parameter	Description	Units
CruiseId	Official UNOLS cruise id	text
ISO_DateTime_UTC	ISO formatted UTC Date and Time	YYYY-MM-DDTHH:MM:SSZ
Latitude	Latitude Position (South is negative)	decimal degrees
Longitude	Longitude Position (West is negative)	decimal degrees
SOG	Instantaneous Speed-over-ground	meters/sec
COG	Instantaneous Course-over-ground [deg. clockwise from North]	decimal degrees

Instruments

Dataset-specific Instrument Name	GPS
Generic Instrument Name	Global Positioning System Receiver
Generic Instrument Description	The Global Positioning System (GPS) is a U.S. space-based radionavigation system that provides reliable positioning, navigation, and timing services to civilian users on a continuous worldwide basis. The U.S. Air Force develops, maintains, and operates the space and control segments of the NAVSTAR GPS transmitter system. Ships use a variety of receivers (e.g. Trimble and Ashtech) to interpret the GPS signal and determine accurate latitude and longitude.

Deployments

TN309

Website	https://www.bco-dmo.org/deployment/536488
Platform	R/V Thomas G. Thompson
Start Date	2014-04-10
End Date	2014-05-20
Description	Original data are available from the NSF R2R data catalog

FK141109

Website	https://www.bco-dmo.org/deployment/629311
Platform	R/V Falkor
Report	https://datadocs.bco-dmo.org/d3/data_docs/Mariana_Perspectives/FK141109_Cruise_Report_JDC_2015-01-12.pdf
Start Date	2014-11-09
End Date	2014-12-09
Description	<p>The very deepest reaches of the sea are one of the planet's last true frontiers. That's mostly because a lack of support for needed technological advancements and vehicles has severely limited access to depths beyond 7,000 meters. But the situation is finally beginning to change, and SOI is helping push the process forward. In November, the institute collaborated with a group of biologists and geologists working aboard R/V Falkor to conduct a new study of one of the deepest places in the world. The team deployed SOI's new full-ocean-depth landers—frames equipped with cameras, sensors and sample collection devices that return to the surface automatically after a set time on the seafloor—as well as three other landers, in the Mariana Trench's Sirena Deep, near Guam. The work, at depths down to almost 11,000 meters, will help answer enduring questions about the biology of such alien zones, including who lives there and how they survive the massive pressure. The research should also improve understanding of the processes that control earthquake and tsunami formation, among others geological goals. Original cruise data are available from the NSF R2R data catalog (Cruise DOI: 10.7284/900733)</p>

[[table of contents](#) | [back to top](#)]

Project Information

Controls on Hadal Megafaunal Community Structure: a Systematic Examination of Pressure, Food Supply, and Topography (HADES)

Website: <http://www.whoi.edu/hades/>

Coverage: Kermadec Trench adjacent to New Zealand: approximately 37 12.75 S and 178 51.43 E to 31 51.29 S and 176 49.07 W

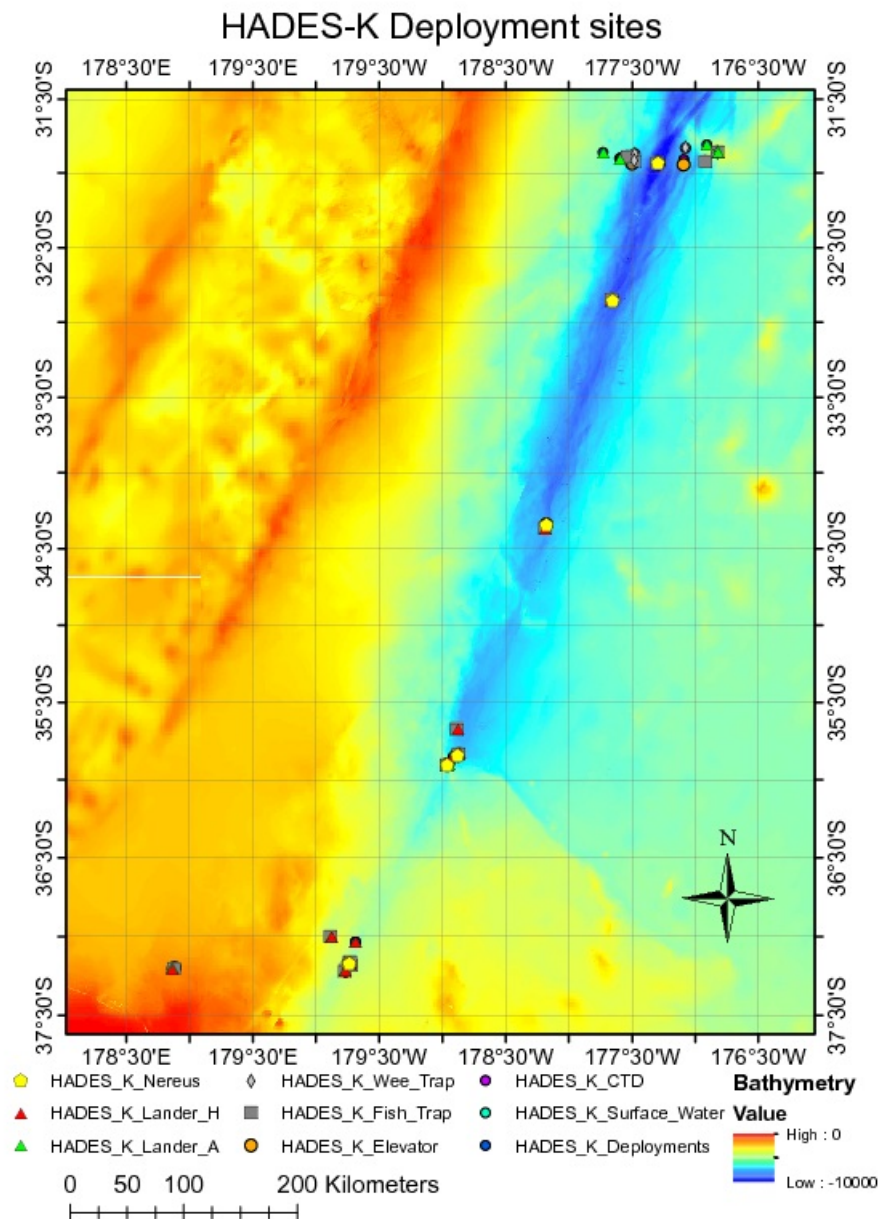
Extracted from the NSF award abstract:

Severe technical challenges associated with the extremes of hydrostatic pressure have prevented major advances in hadal ecological studies, and relegated hadal systems to among the most poorly investigated habitats on Earth. Through this project, Hadal Ecosystems Studies (HADES) program, PIs will determine the composition and distribution of hadal species, the role of hadal pressures (piezolyte concentrations, enzyme function under pressure), food supply (distribution of POC with the abundance and biomass of trench organisms, and metabolic rates/energetic demand), and depth/topography (genetic divergence and spatial

connectivity of populations) have on impacting deep-ocean community structure. This project will examine these factors using the world's first full-ocean depth hybrid remotely operated vehicle (HROV) in conjunction with the only full-ocean depth imaging lander (Hadal-Lander). This project will provide the first seafloor data and samples in one of the world's best, yet little known trenches- the Kermadec Trench (SW Pacific Ocean).

Megafaunal community structure and the relationship between POC and benthic bacterial biomass will be examined as a function of depth and location by systematic high-definition imaging and sediment/faunal sampling transects from abyssal to full trench depths both along and perpendicular to the trench axis. Population genetic approaches will provide levels of genetic divergence and evolutionarily independent lineages to assess the role of depth and topography in trenches and their adjacent abyssal plain in promoting the formation of species. Physiological constraints will be investigated by examining in-situ respiration of selected fauna and tissue concentrations of such protein stabilizers as trimethylamine oxide (TMAO), and the structural adaptations of macromolecules.

Image of NEREUS Deployment Sites. [click on the image to view a larger version]



[[table of contents](#) | [back to top](#)]

Funding

Funding Source	Award
NSF Division of Ocean Sciences (NSF OCE)	OCE-1131620
NSF Division of Ocean Sciences (NSF OCE)	OCE-1130712
NSF Division of Ocean Sciences (NSF OCE)	OCE-1130494

[[table of contents](#) | [back to top](#)]