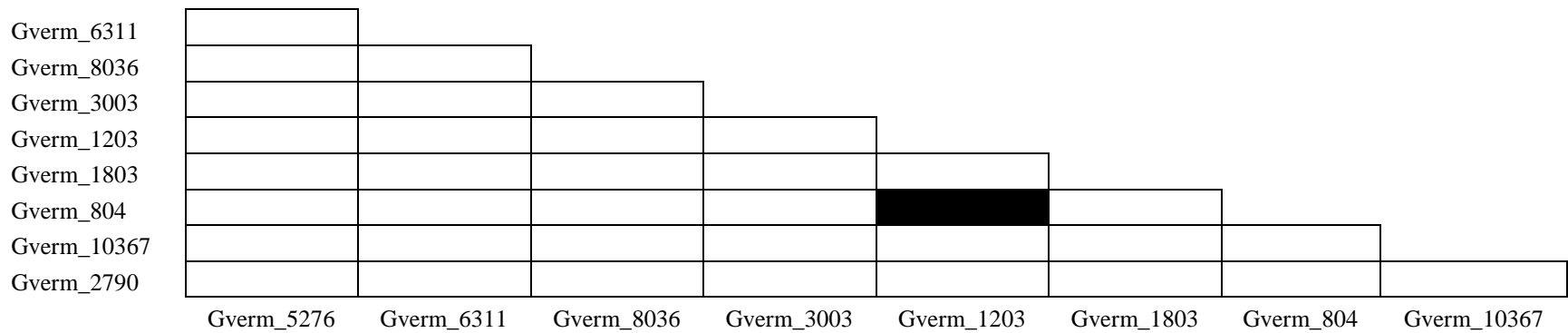
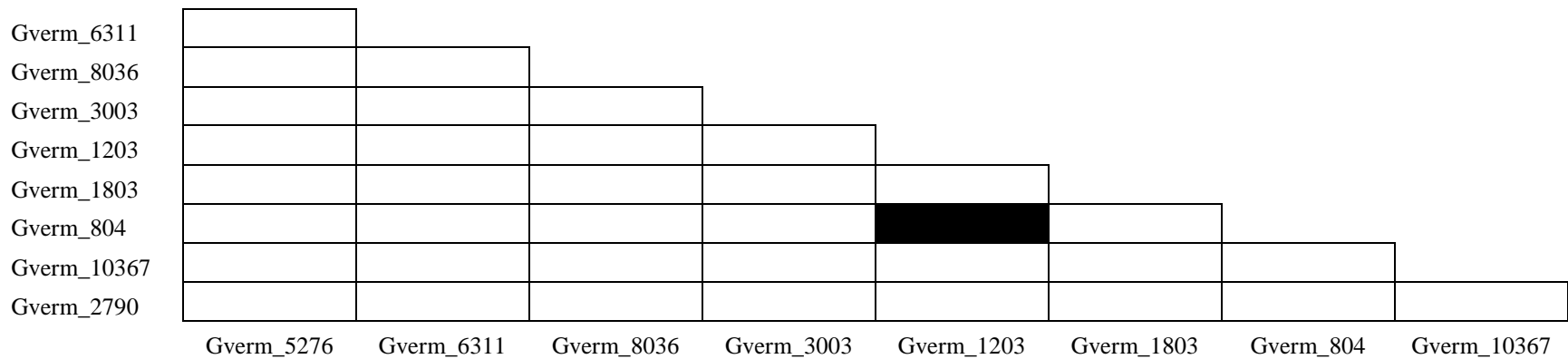


Table S4 Linkage disequilibrium analysis for microsatellite loci developed for *Gracilaria vermiculophylla*. Darkened cells indicate pairs of loci that show significant linkage disequilibrium after Bonferroni correction ( $p$ -value threshold  $< 0.006$  at  $\alpha = 0.05$ ).

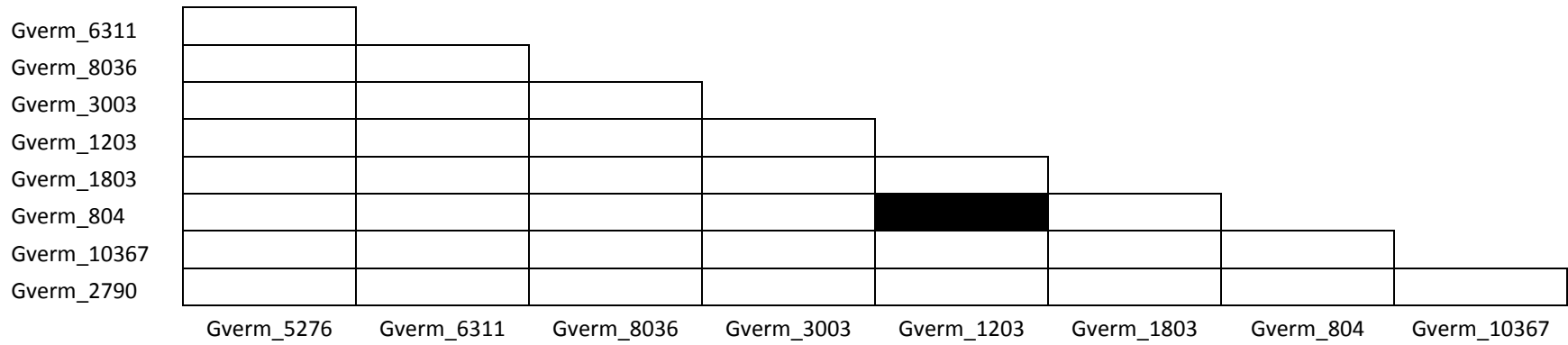
A) Akkeshi



B) Elkhorn Slough



C) Fort Johnson



D) Nordstrand

